

MATCHY MATCHY

SEWING CLUB

CABANA TIE PLAYSUIT

@MATCHYMATCHYSEWINGCLUB

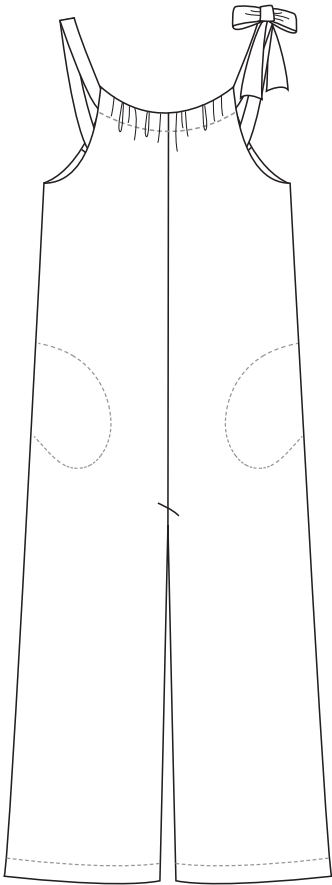
#CABANATIEPLAYSUIT

SIZE GUIDE

XXS	_____
XS	-----
S	-----
M	-----
L	-----
XL	-----
2XL	-----
3XL	-----
4XL	-----
5XL	-----
6XL	-----

LEGEND

- └ Notch
- └└ Double notch: back of garment
- ◼ Triangle: Center notch
- CF: center front
- CB: center back



1 inch
print size
test

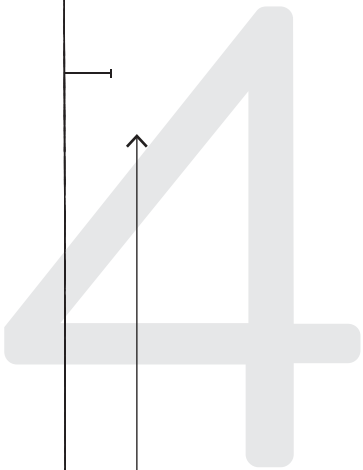
2 cm
print size
test

2

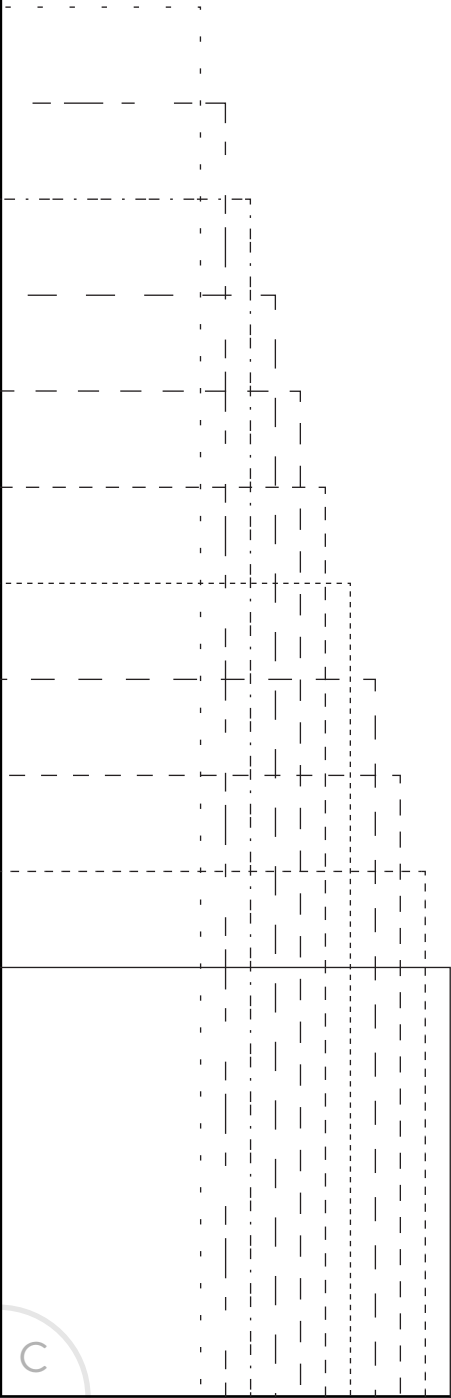
3

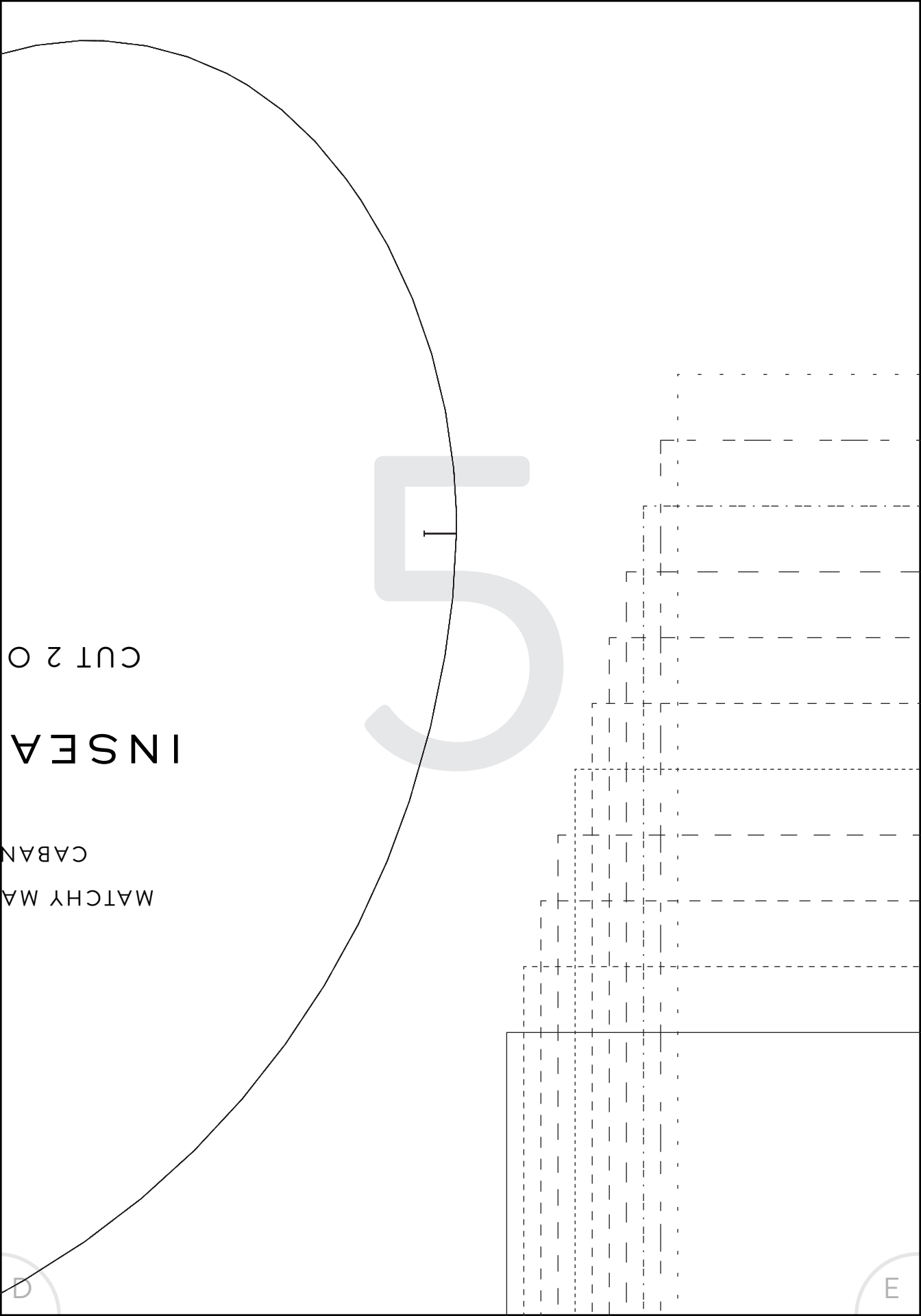
M POCKET

POSITIVE PAIRS



GRAINLINE





CUT 2 O

INSEA

CABAN

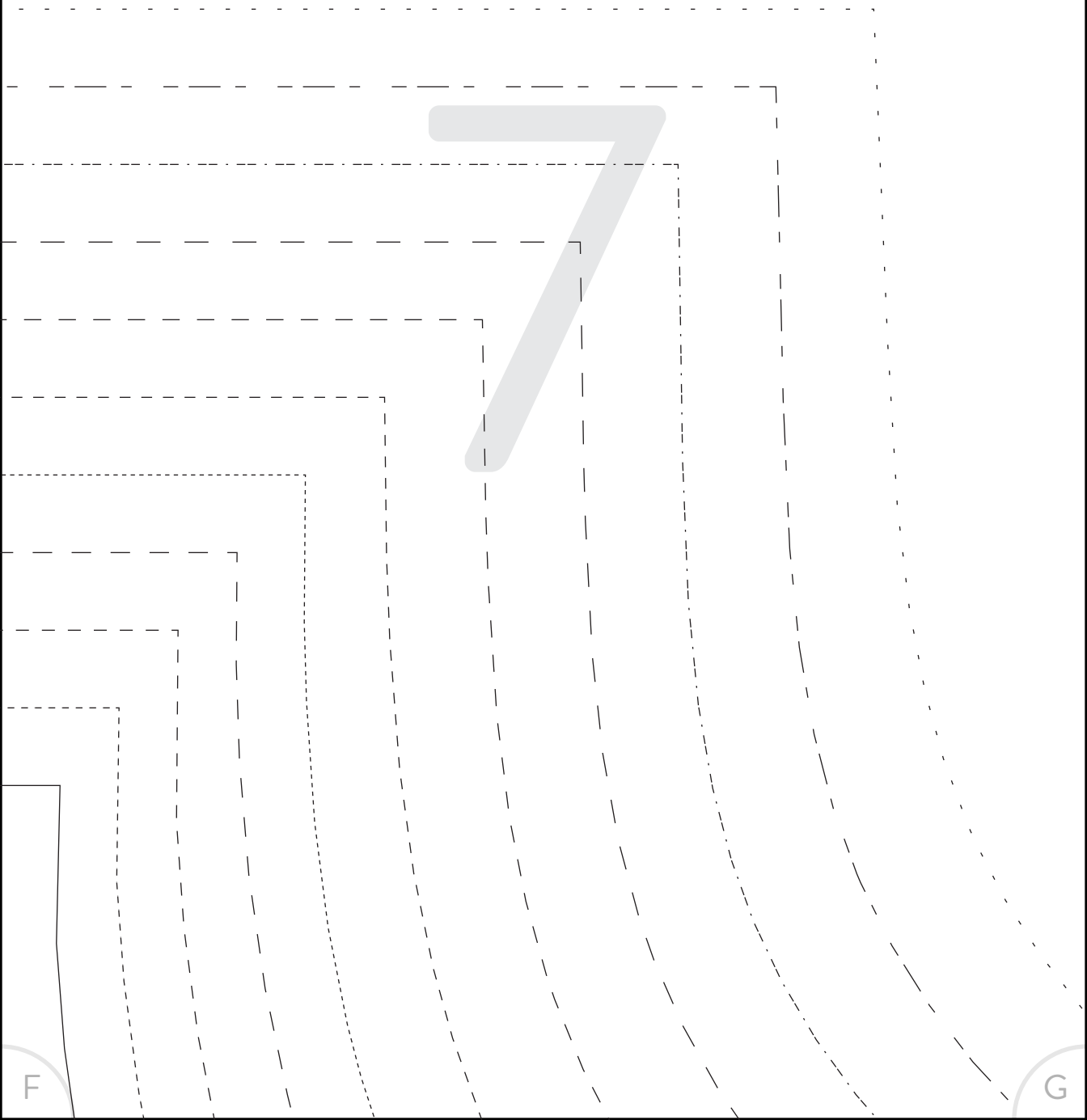
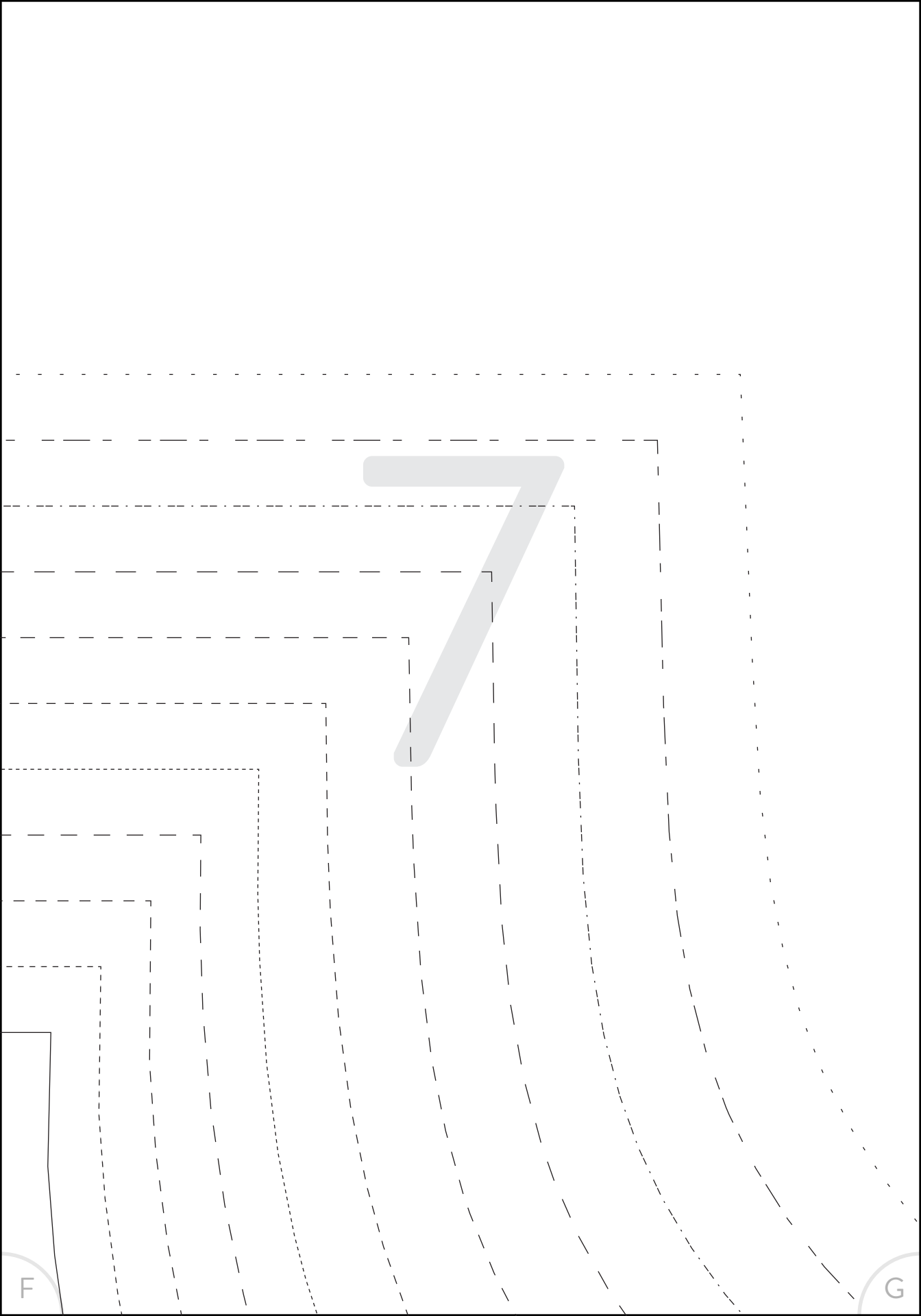
MATCHY MA

D

E

5

6



F

G

8

9

11

lengthen/shorten here

C

D

J

K

12

D

E

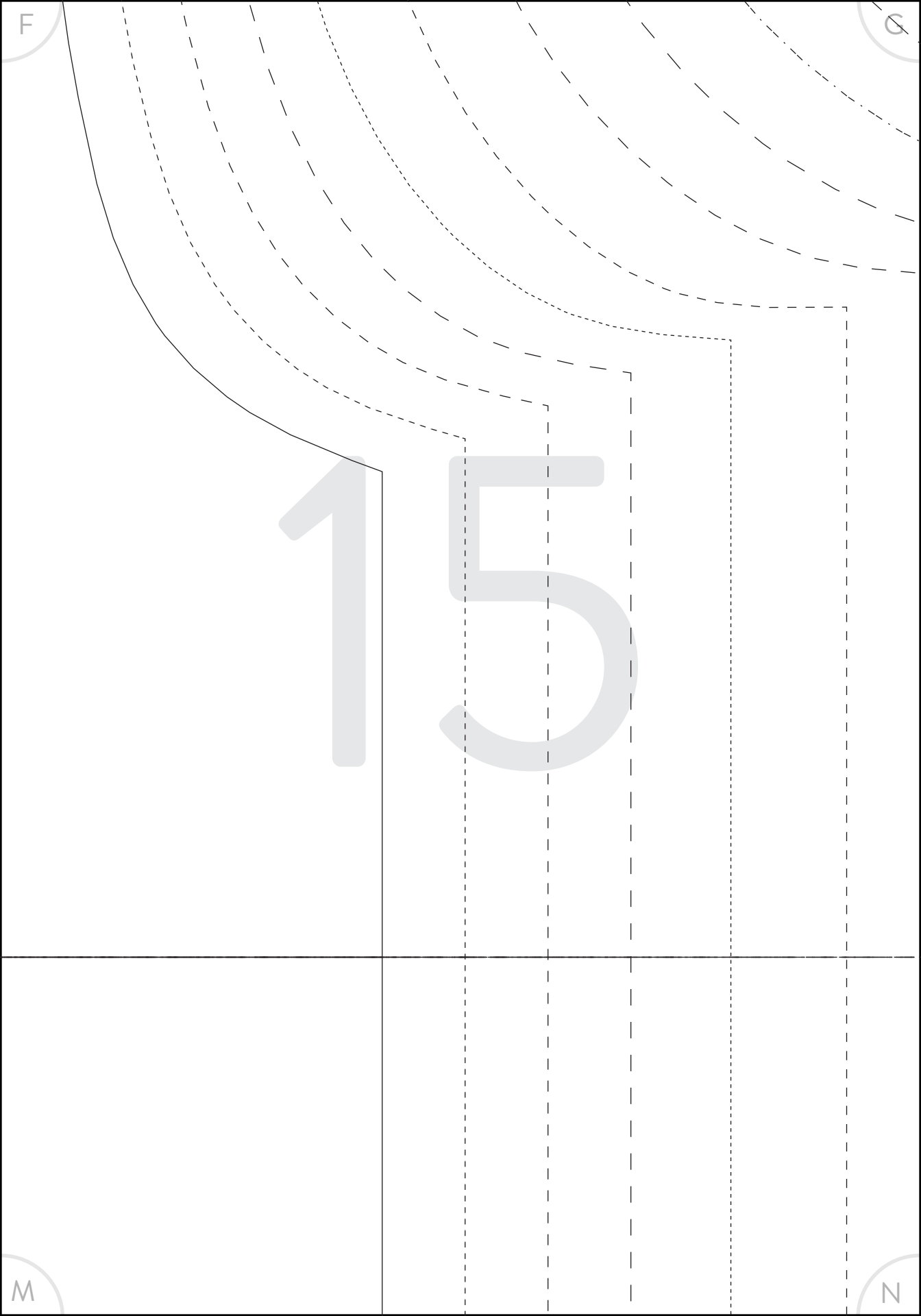
13

K

L

14

lengthen/shorten here



F

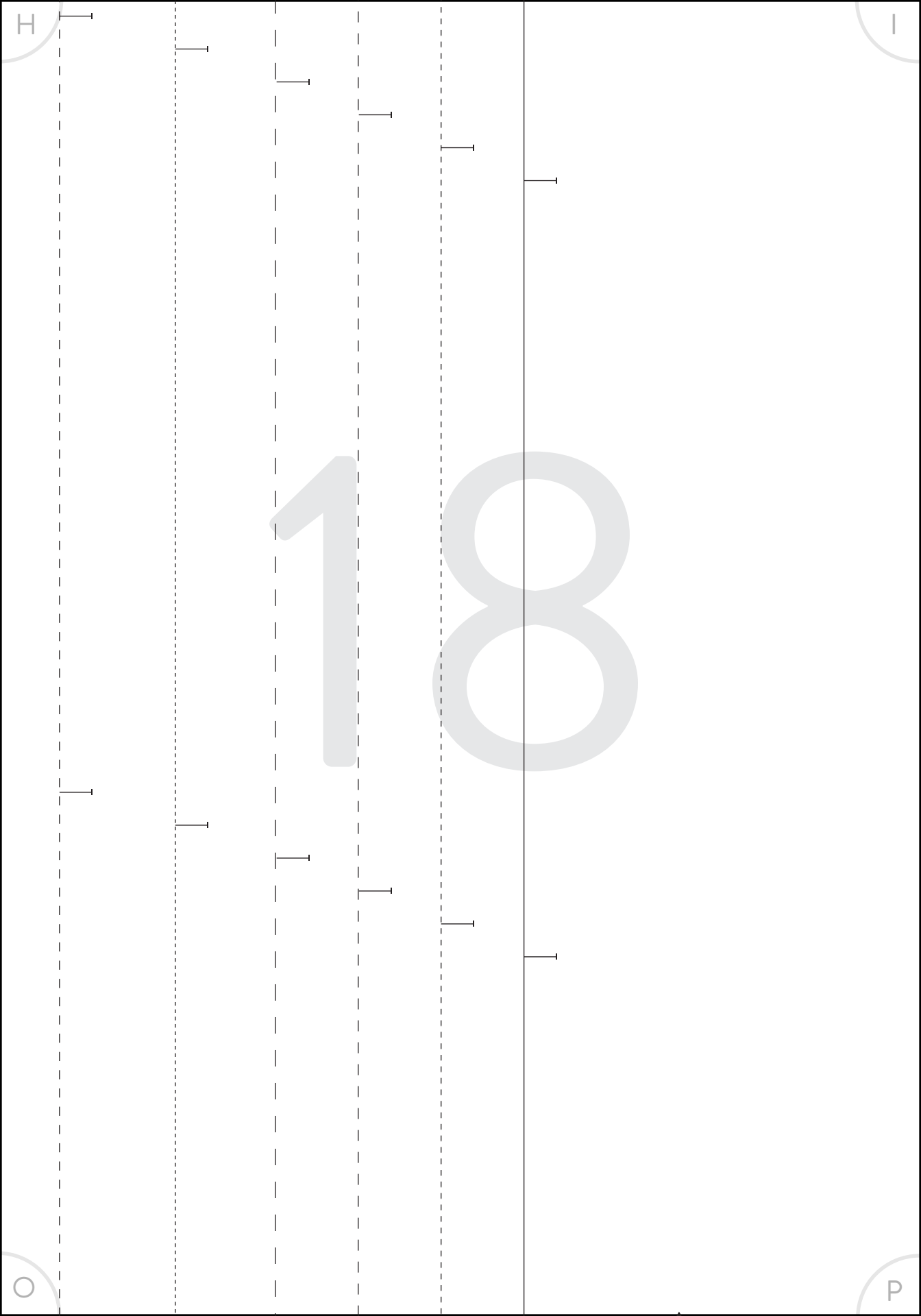
G

M

N

16

17



I J

19

P Q

J

K

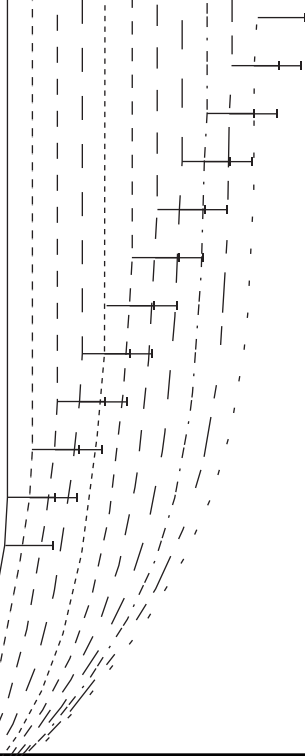
20

Q

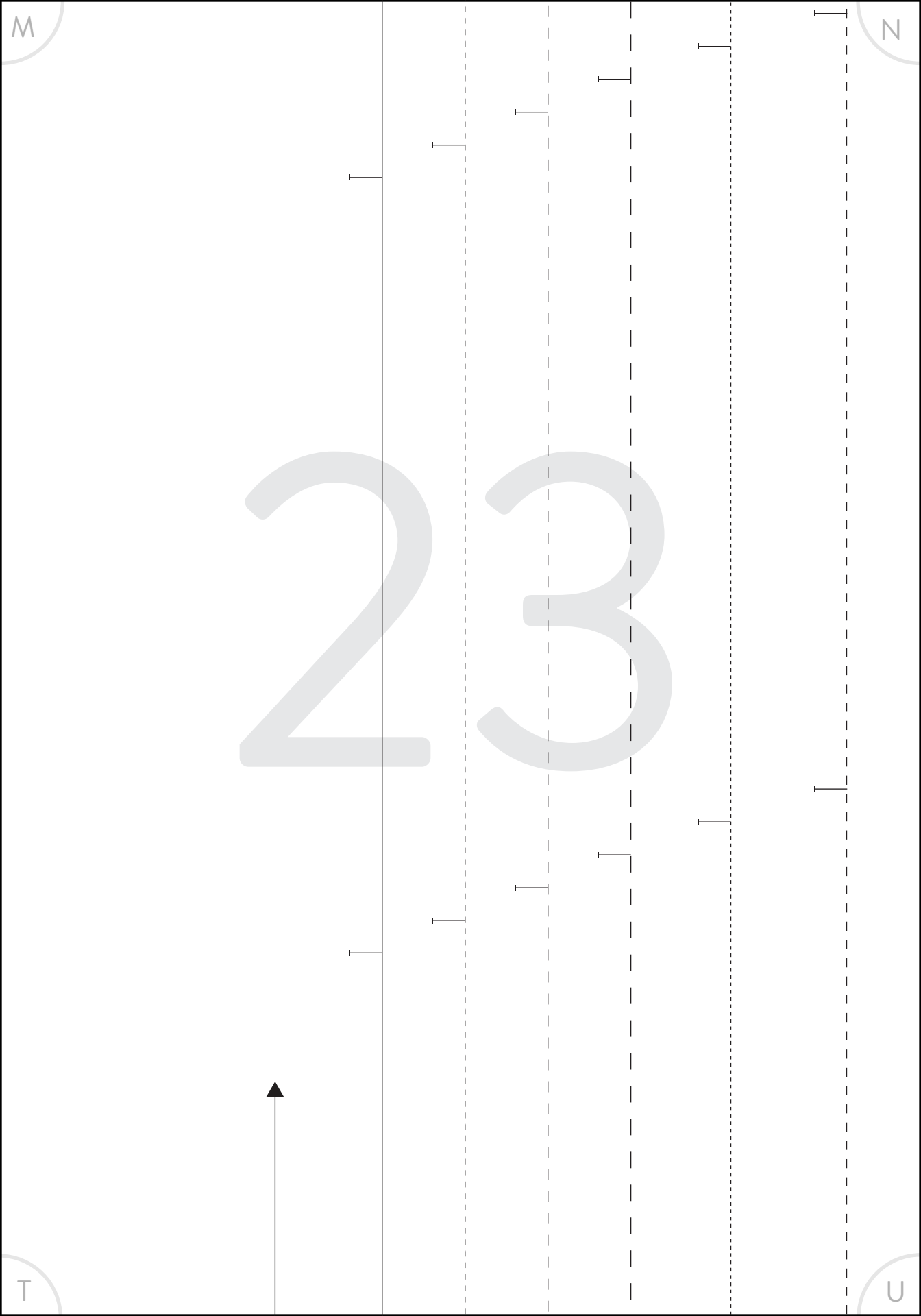
R

2

1

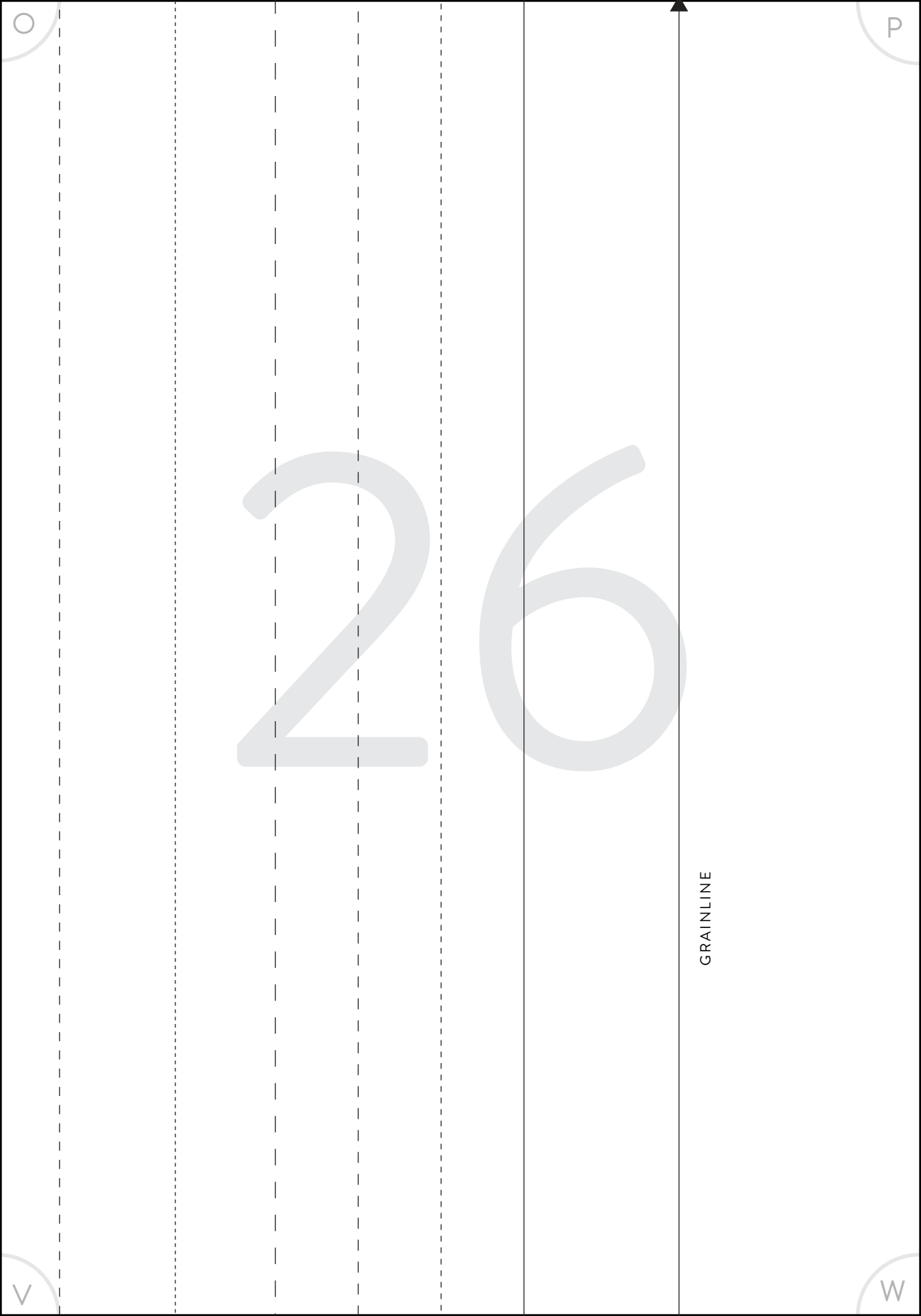


22



24

25



26

GRAINLINE

O

P

V

W

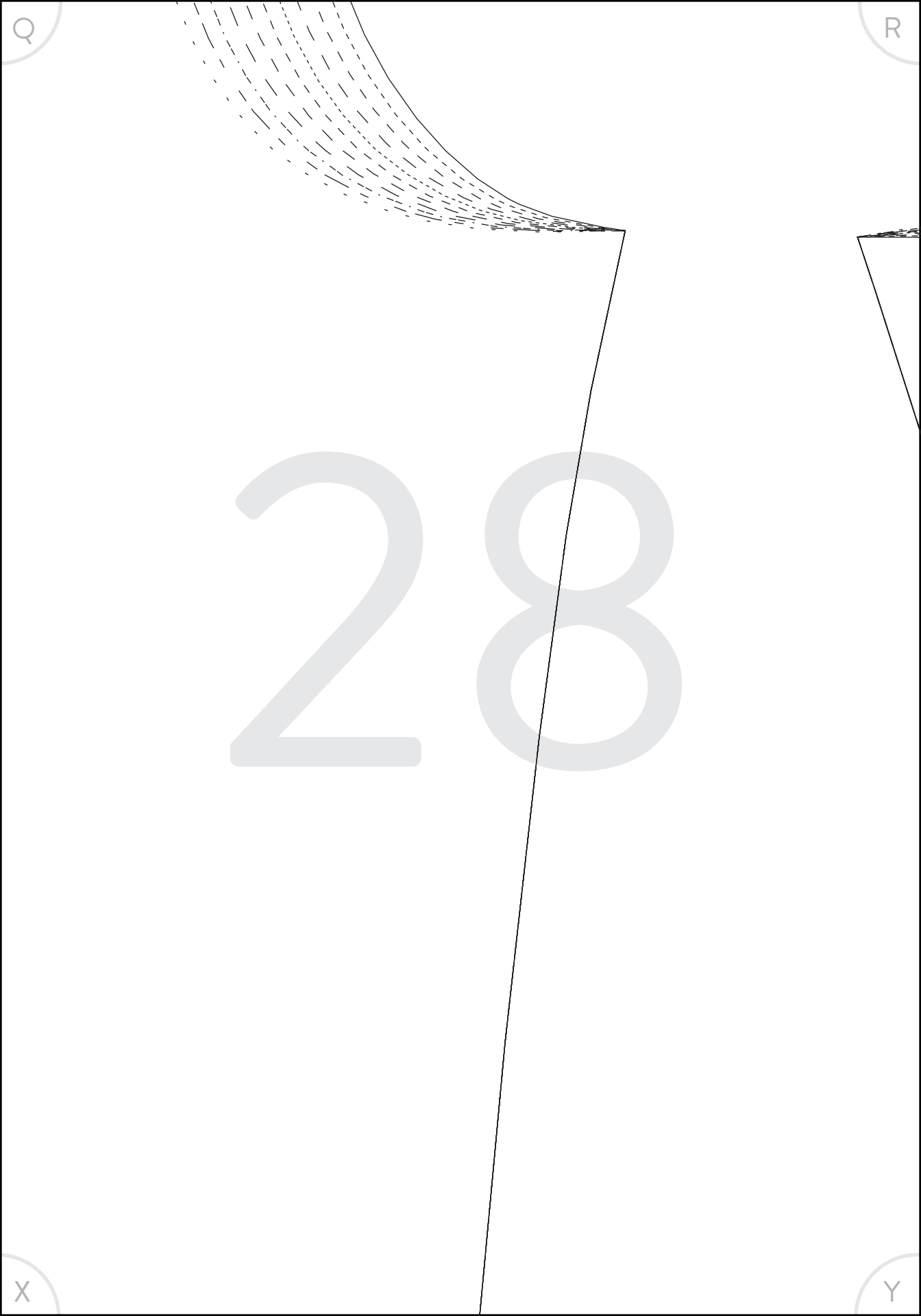


MATCHY MATCHY SEWING CLUB
CABANA TIE PLAYSUIT

FRONT BODY

CUT 2 (OPPOSITES)

1/2 in (1.3cm) seam allowance



Q

R

X

Y

R

S

29

Y

Z

2

MATCHY MATCHY SEWING CLUB
CABANA TIE PLAYSUIT

BACK BODY

CUT 2 (OPPOSITES)

1/2 in (1.3cm) seam allowance

31

GRAINLINE

32

3

3



34

35

36

37

38

aa

bb



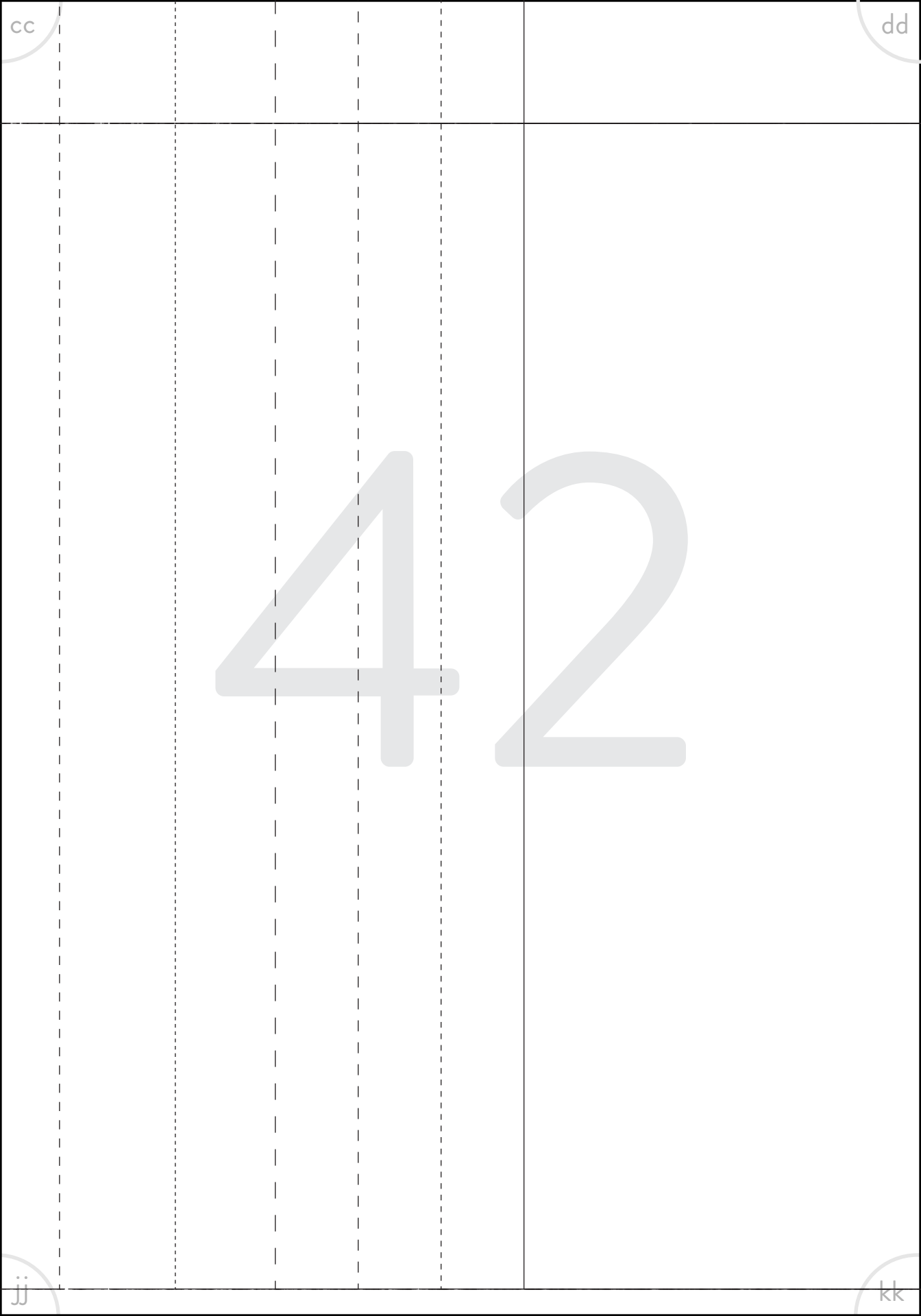
39

hh

ii

40

41



cc

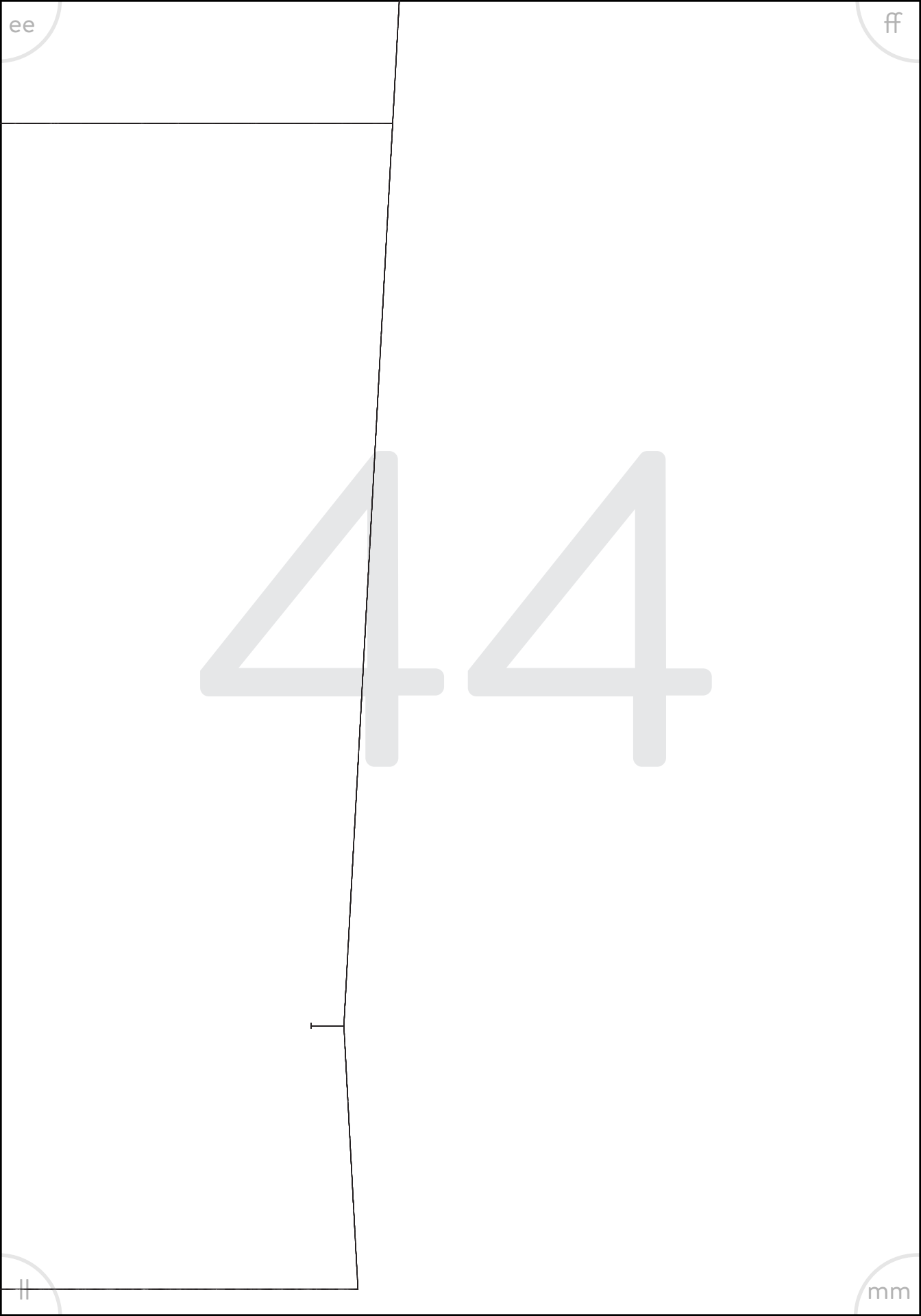
dd

jj

kk

lengthen/shorten here

43



ee

ff

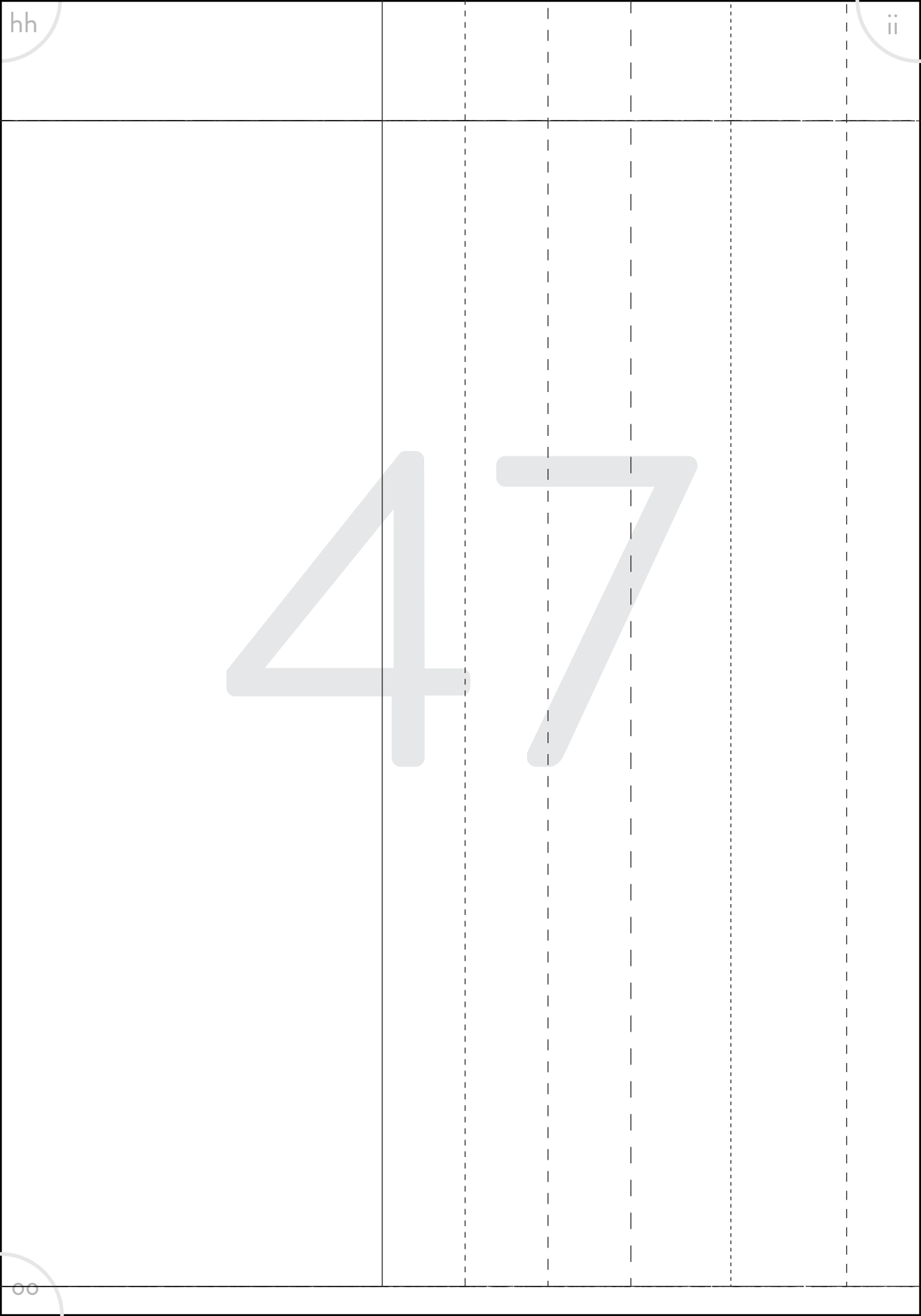
44

||

mm

45

46



hh

ii

47

oo

48

4

MATCHY MATCHY SEWING CLUB

CABANA TIE PLAYSUIT

49

5

MATCHY MATCHY SEWING CLUB

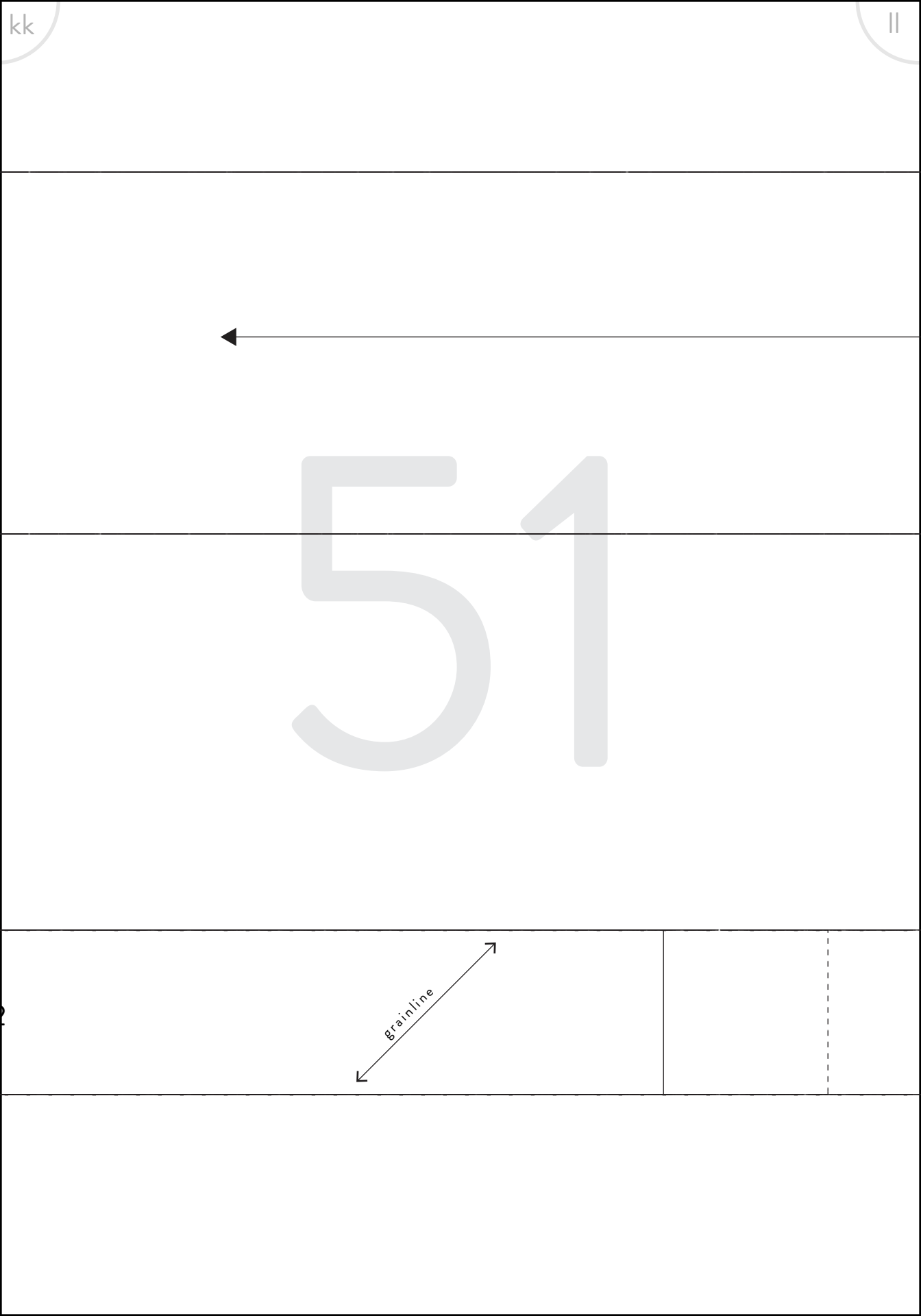
CABANA TIE PLAYSUIT

SHOULDER STRAP

CUT 2

50

ARMHOLE BIAS TAPE – CUT 2

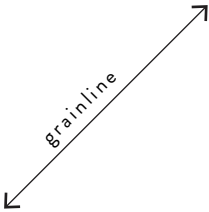


kk

||



51



grainline



GRAINLINE

52



53

--	--	--	--

--	--	--	--	--	--

54



55