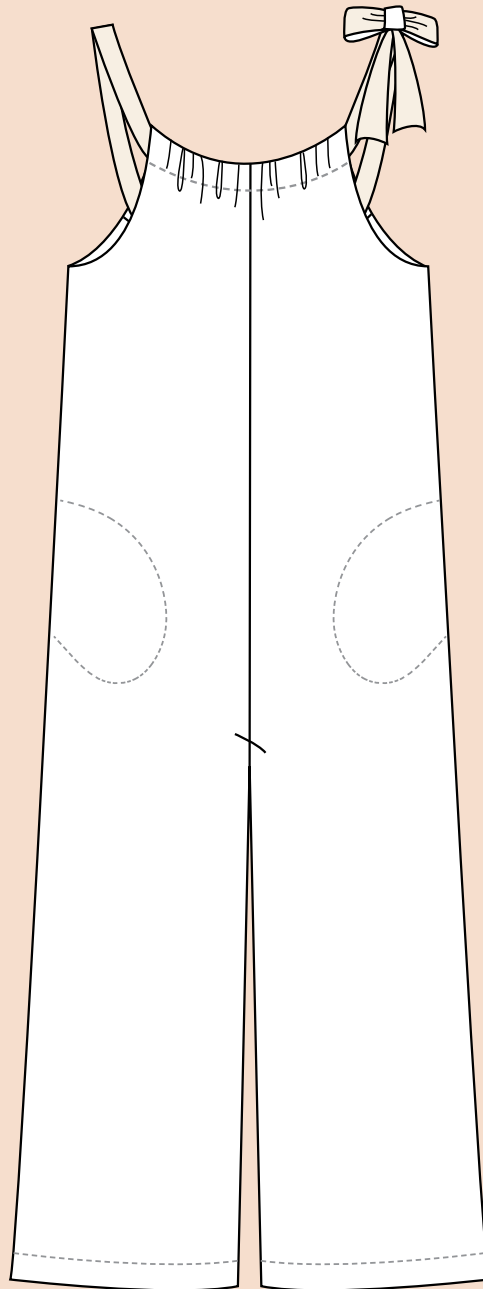


# CABANA TIE PLAYSUIT

---

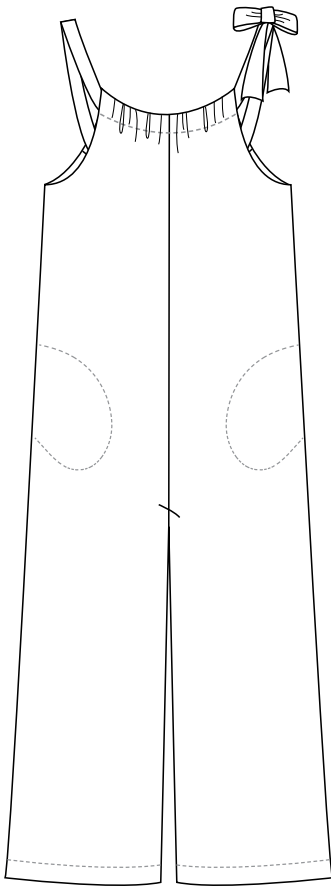
① BEGINNER | 11 SIZES | 1 VIEW



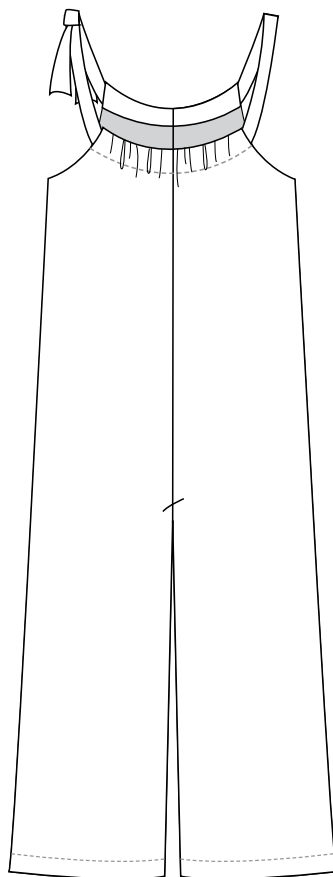
**MATCHY MATCHY**

SEWING CLUB

## FRONT



## BACK



**DESCRIPTION** — The Cabana Tie Playsuit is an easy to sew, effortless jumpsuit. The fit is slightly oversized and relaxed with wide, voluminous legs and a dropped crotch. It includes inseam pockets and a drawstring style shoulder strap that can be adjusted to your desired length and finished off in a large bow or knot.

With all Matchy Matchy sewing patterns, we've designed the Cabana Tie Playsuit to have simple shapes and easy construction to take the overwhelm out of sewing and to help you find the joy of discovery.

**FABRIC** — Light to medium weight fabrics with a nice drape such as rayon, cotton lawn and linen. Or 4 way stretch light to medium weight knit fabrics such as jersey, rib knit and cotton-spandex blends.

**NOTIONS** — Coordinating thread

**DIFFICULTY** — ① Beginner: techniques include bias binding and inseam pockets.

**BEFORE YOU START**

- Wash and dry all of your fabric before cutting.
- The Cabana Tie Playsuit is drafted for a 5'5" (165 cm) individual. We recommend choosing your size based on your bust and hip measurements. This garment is intended to fit loosely. If you are between sizes we recommend cross referencing with the finished garment measurement sizes to calculate your best fit. All garments will fit individuals differently, we highly recommend making a muslin first to perfect your specific fit needs.
- All seam allowances are included in the pattern and are ½" (1.3 cm) unless otherwise stated.
- Please read through all instructions before you begin.

**PDF PRINTING INSTRUCTIONS** — Make sure that your printer scaling is turned off and is set to print at 100%. Print page 1 first and measure to make sure the 1" (2.5 cm) square is the correct size. Cut off the right and bottom borders. Tape pages together from left to right, matching the circles and letters. The thin border lines on each page should butt up against each other, not overlap. Tape the rows together to complete the pattern.

For technique tutorials go to  
[matchymatchysewingclub.com/blogs/blog/tagged/tutorials](https://matchymatchysewingclub.com/blogs/blog/tagged/tutorials)  
 or click here

For FAQ on printing + assembling patterns go to  
[matchymatchysewingclub.com/pages/faqs](https://matchymatchysewingclub.com/pages/faqs)  
 or click here

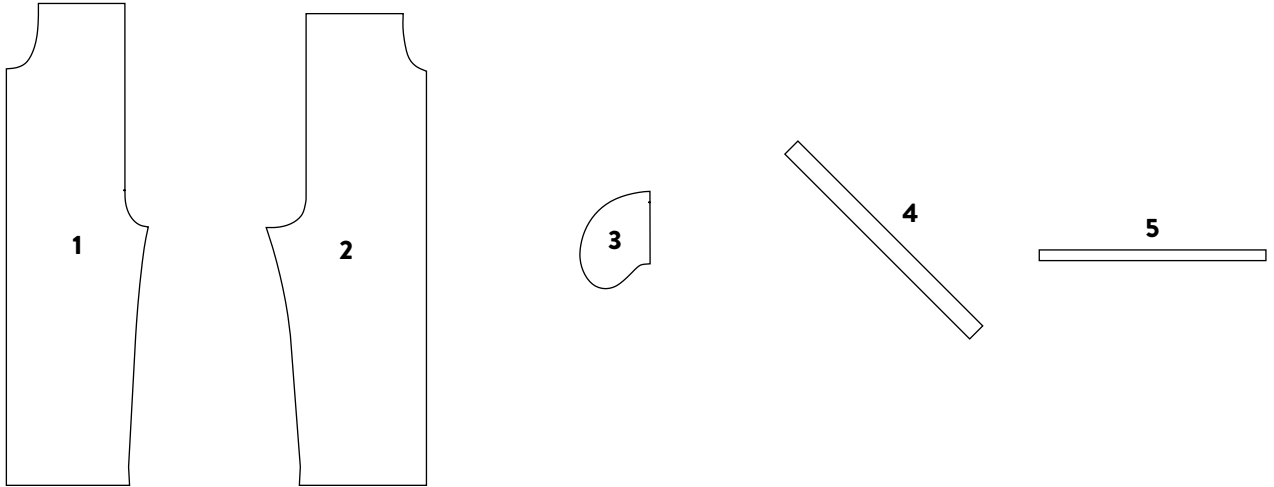
**LEGEND** See mini legend on bottom of each page of sewing instructions



Right  
Side



Wrong  
Side



	FRONT BODY	BACK BODY	INSEAM POCKETS	SHOULDER STRAP	ARMHOLE BIAS TAPE
<b>XXS-XL</b>	Pages 2-4, 10-12, 18-20, 26-28, 34-36, 42-44	Pages 5-7, 13-15, 21-23, 28-31, 37-39, 45-47	Pages 4-5, 12	Pages 49-54	Pages 49-52
<b>2XL-6XL</b>	Pages 1-4, 9-12, 17-20, 25-28, 33-36, 41-44	Pages 5-8, 13-16, 21-24, 28-32, 37-40, 45-48	Pages 4-5, 12	Pages 49-55	Pages 49-53

### SIZE CHART (INCHES/CENTIMETERS)

Size	XXS	XS	S	M	L	XL	2XL	3XL	4XL	5XL	6XL
Chest	31-32 79-81.5	33-34 84-86.5	35-36 89-91.5	37-38 94-96.5	39.5-41 100.5-104.5	42.5-44 108-112	46-48 117-122	50-52 127-132	54-56 137-142	58-60 147-152	62-64 157-162
Waist	24-25 61-63.5	26-27 66-68.5	28-29 71-74	30-31 76-79	32.5-34 82.5-86.5	35.5-37 90-94	39-41 99-104	43-45 109-114.5	47-49 119-124	51-53 129-134	55-57 140-145
Hip	34-35 86.5-89	36-37 91.5-94	38-39 96.5-99	40-41 101.5-104	42.5-44 108-112	45.5-47 115.5-119.5	49-51 124.5-129.5	53-55 135-140	57-59 145-150	61-63 155-160	65-67 165-170

### FINISHED GARMENT MEASUREMENTS (INCHES/CENTIMETERS)

Size	XXS	XS	S	M	L	XL	2XL	3XL	4XL	5XL	6XL
Bust (ungathered)	46.5 118	48.5 123	50.5 128	52.5 133	55.5 141	58.5 149	62.5 159	66.5 169	70.5 179	74.5 189	78.5 199
Waist	46.5 118	48.5 123	50.5 128	52.5 133	55.5 141	58.5 149	62.5 159	66.5 169	70.5 179	74.5 189	78.5 199
Hip	46.5 118	48.5 123	50.5 128	52.5 133	55.5 141	58.5 149	62.5 159	66.5 169	70.5 179	74.5 189	78.5 199
Inseam	26 66	26 66	26 66	26 66	26 66	26 66	26 66	26 66	26 66	26 66	26 66

### FABRIC REQUIREMENTS (YARDS/METERS)

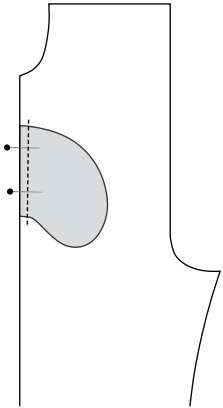
Size	XXS	XS	S	M	L	XL	2XL	3XL	4XL	5XL	6XL
44"	3.5 3.2	3.5 3.2	3.5 3.2	3.5 3.2	3.75 3.4	3.75 3.4	7 6.4	7 6.4	7 6.4	7 6.4	7 6.4
54"	3.5 3.2	3.5 3.2	3.5 3.2	3.5 3.2	3.75 3.4	3.75 3.4	3.75 3.4	3.75 3.4	3.75 3.4	3.75 3.4	3.75 3.4

Extra fabric may be needed to match stripes, plaids, or directional prints.

### 1. Label Pattern Pieces

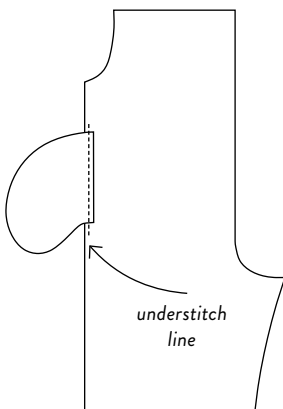
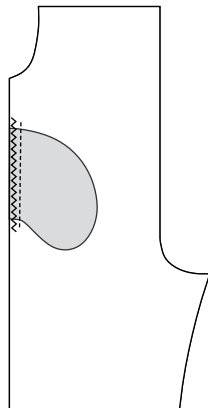
- A. Print the pattern piece labels on page 8 and pin to your fabric as you cut. This will be helpful to avoid any confusion during construction.

### 2. Prepare Inseam Pockets



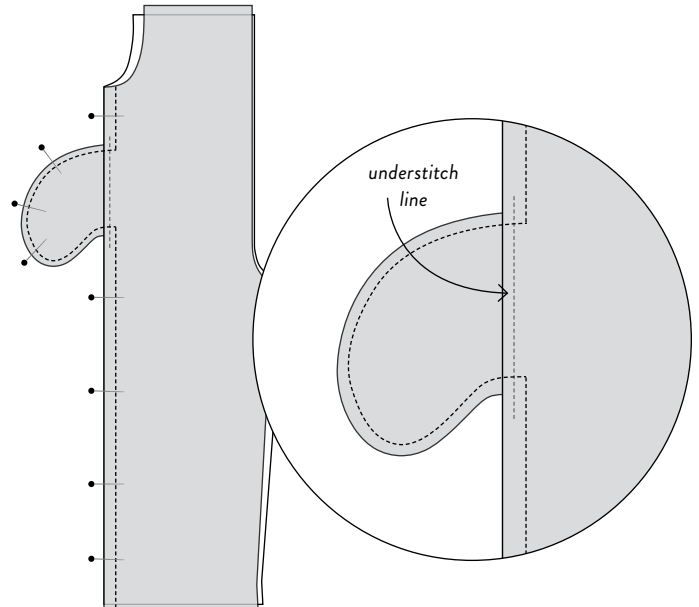
- A. With right sides together pin one pocket to the front body, matching at notches. Sew with a  $\frac{1}{2}$ " (1.3 cm) seam allowance.

- B. Finish this seam with a zig zag stitch or serger, starting and stopping 1" (2.5 cm) above and below the pocket.

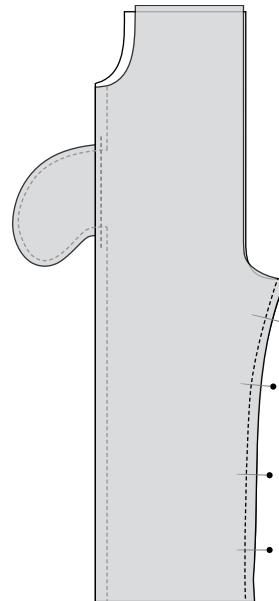


- C. With the right side facing up press the pocket and seam allowances away from the garment. Understitch the pocket with a  $\frac{1}{8}$ " (0.3 cm) seam allowance, making sure to sew through all layers. This will ensure your pocket stays in place. Repeat steps 2A-2C for all remaining pockets.

### 3. Sew Side Seams and Inseams

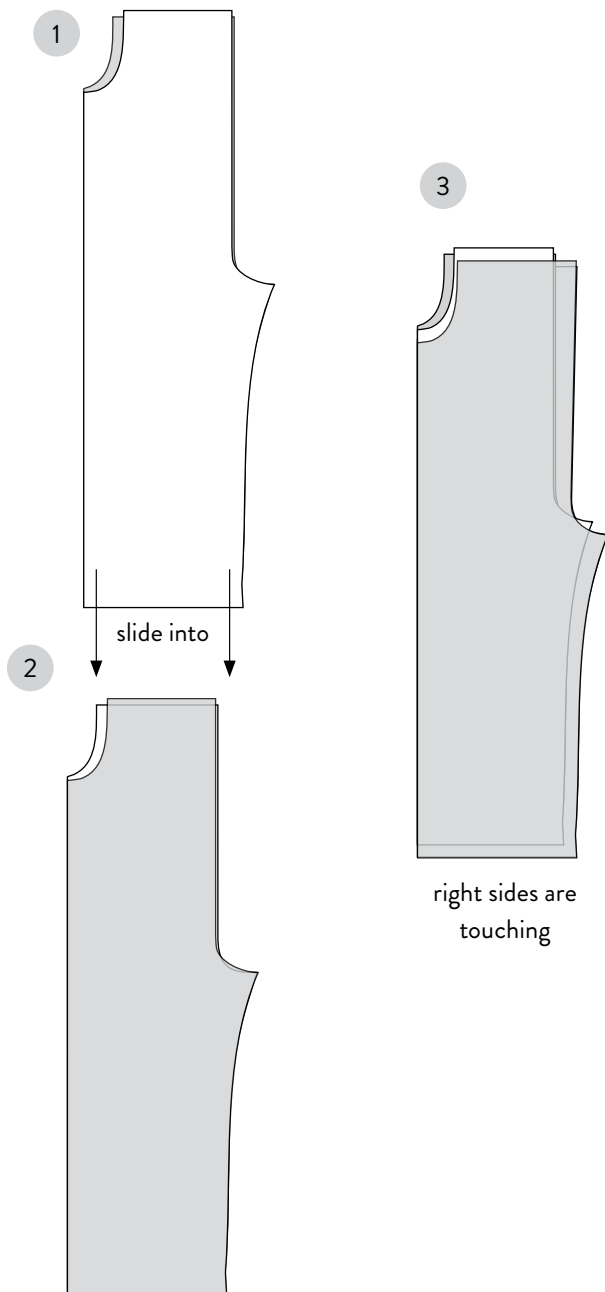


- A. With right sides together align the front and back side seams, matching at the notches and making sure the pockets are aligned, pin in place. Sew with a  $\frac{1}{2}$ " (1.3 cm) seam allowance along the side seam and around the pocket. When sewing around the pocket be sure to capture the understitching line you made in step 2C within your seam allowance. Finish seam with a zig zag stitch or serger. Press seam toward front.

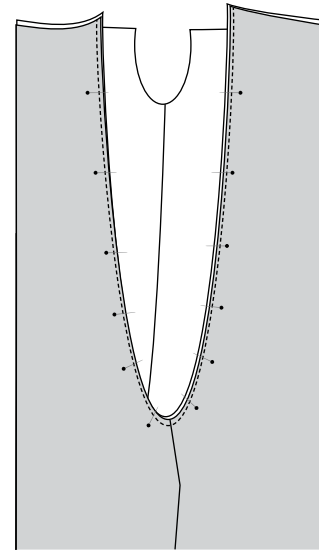


- B. With right sides together align the inseams, matching at notches. Pin in place. Sew with a  $\frac{1}{2}$ " (1.3 cm) seam allowance. Finish seam with a zig zag stitch or serger. Press seam toward back. Repeat for other leg.

#### 4. Connect the Two Sides

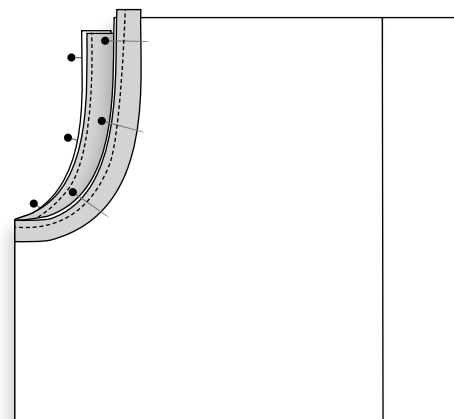
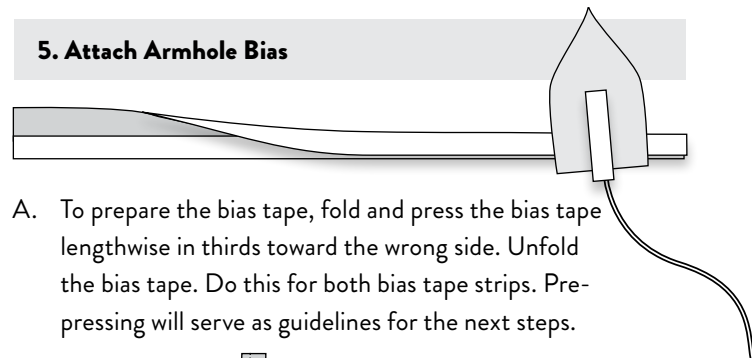


- A. Turn one leg inside out while keeping the other leg right side out. Slide the leg that is right side out into the leg that is inside out. The right sides will now be touching.

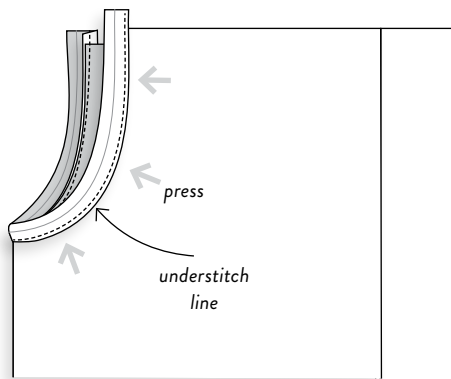


- B. Align the front and back rise, matching at notches and crotch point. Pin in place. Sew with a  $\frac{1}{2}$ " (1.3 cm) seam allowance. Finish with a zig zag stitch or serger. Press seam toward one side.

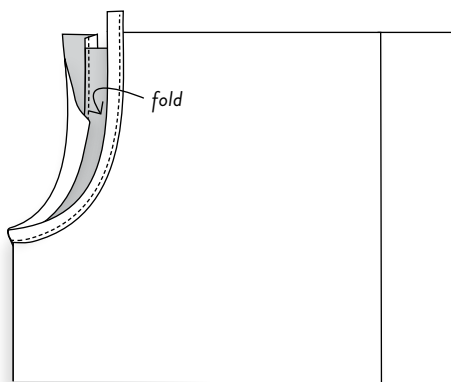
#### 5. Attach Armhole Bias



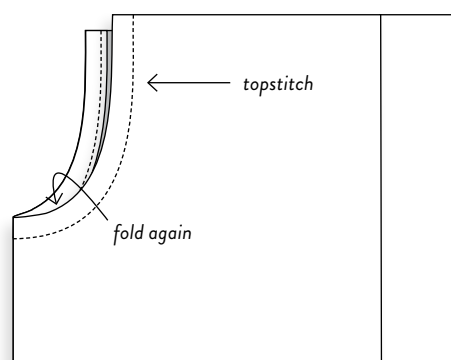
- B. With right sides together pin the bias tape along the armhole, being careful not to stretch the bias tape. Once you reach the end of the armhole trim off any extra bias tape. Sew the bias tape to the armhole with a  $\frac{3}{8}$ " (1 cm) seam allowance, using the press line closest to the armhole as a guide.



- C. Press the bias tape and seam allowances away from the armhole. Understitch the seam allowance to the bias tape  $\frac{1}{8}$ " (0.3 cm) away from the seam.

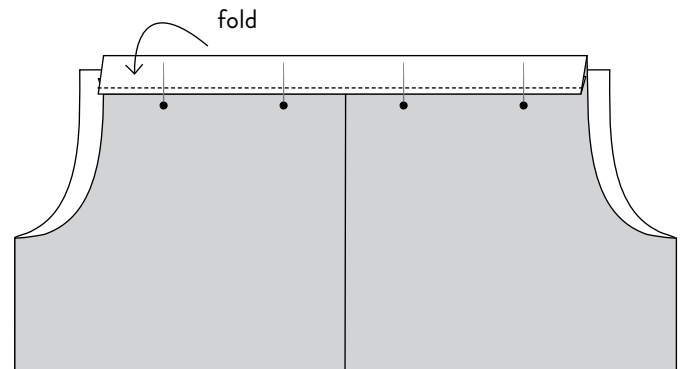


- D. Using the press line as a guide fold the bias tape down  $\frac{3}{8}$ " (1 cm) from the raw edge toward the wrong side. This fold will cover your seam allowance.



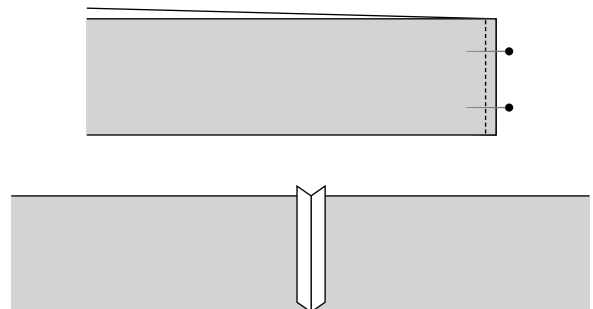
- E. Fold again another  $\frac{3}{8}$ " (1 cm) toward the wrong side, enclosing the raw edge. Work around the armhole pinning in place as you go. Press if needed. Your bias tape will now be on the inside of your garment and not visible on the right side of your armhole. Topstitch the bias tape with a  $\frac{1}{8}$ " (0.3 cm) seam allowance. Repeat steps 5A-5E for other armhole.

## 6. Prepare Neckline Casing

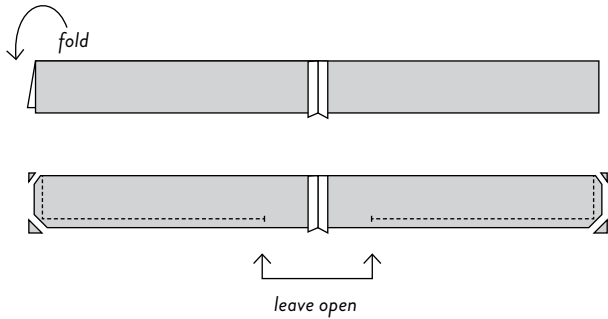


- A. Fold the front neckline down toward the wrong side by  $\frac{1}{2}$ " (1.3 cm). Press in place. Fold over again by another  $1\frac{1}{4}$ " (3 cm). Press and pin in place. Sew  $\frac{1}{8}$ " (0.3 cm) away from the fold line, creating a casing for your shoulder strap. Repeat for back neckline.

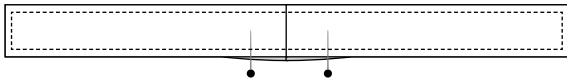
## 7. Prepare Shoulder Strap



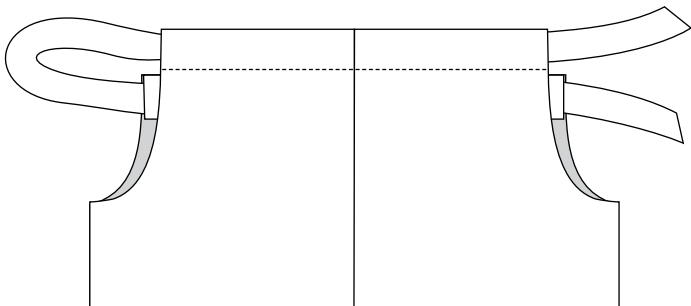
- A. With right sides together align the short ends of the two shoulder strap pattern pieces. Pin in place. Sew with a  $\frac{1}{2}$ " (1.3 cm) seam allowance. Press seam open. This will form one long strap.



- B. Fold the strap in half lengthwise so that right sides are touching. Sew along the raw edges with a  $\frac{3}{8}$ " (1 cm) seam allowance. Leave a 3" (8 cm) opening at center back seam for turning. Trim the corners to reduce bulk.

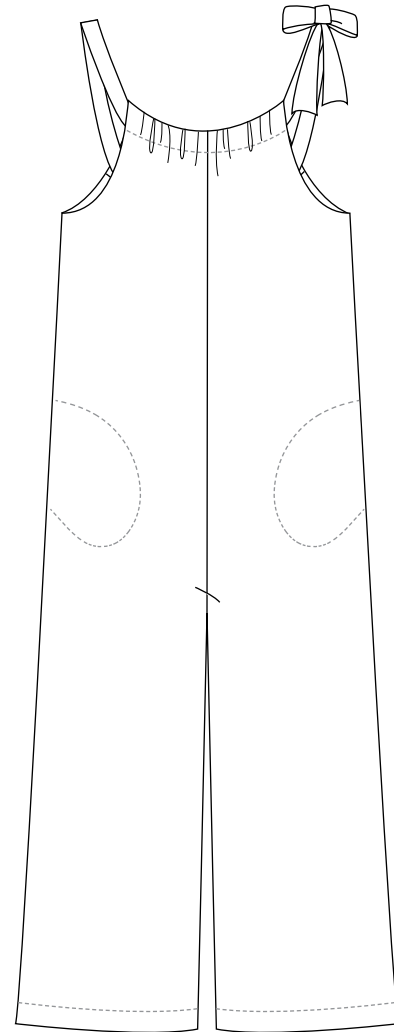


- C. Turn the strap right side out through the center back opening. You can use a loop turner to make this step easier. Pull the corners out so they are square and press. At the opening, fold and press under the seam allowances. Pin in place. Topstitch with a  $\frac{1}{8}$ " (0.3 cm) seam allowance around the entire strap, this will also close the opening.



- D. Thread the strap through the front and back neck casings using a safety pin or bodkin.

## 8. Hem Legs

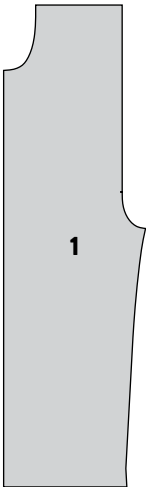
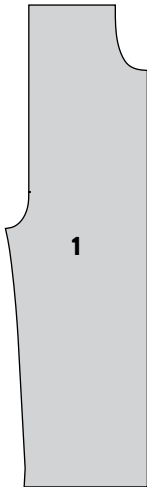
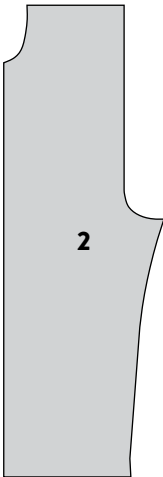
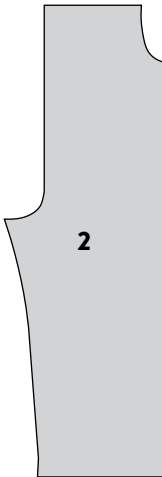
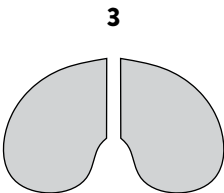
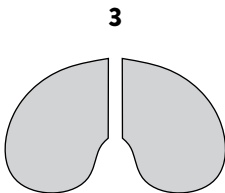
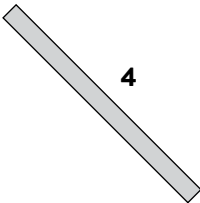
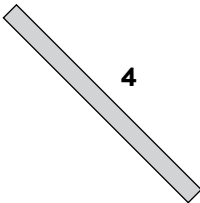
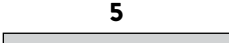
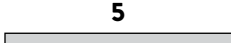


- A. Press the raw edge of the pant leg under by  $\frac{1}{2}$ " (1.3 cm) toward the wrong side. Press under again by another 1.5" (4 cm). Pin in place and sew along the folded line. Repeat for other pant leg.

## Yay, you're done!

Show us your new Cabana Tie Playsuit  
@matchymatchysewingclub | #cabanatieplaysuit

Print and cut out these labels to pin to your fabric as you cut, this will be helpful to avoid any confusion during construction.

 <p><b>1</b></p>	 <p><b>1</b></p>	 <p><b>2</b></p>	 <p><b>2</b></p>
<b>Front Body Left</b> Cabana Tie Playsuit	<b>Front Body Right</b> Cabana Tie Playsuit	<b>Back Body Left</b> Cabana Tie Playsuit	<b>Back Body Right</b> Cabana Tie Playsuit
 <p><b>3</b></p>	 <p><b>3</b></p>	 <p><b>4</b></p>	 <p><b>4</b></p>
<b>Inseam Pockets</b> Cabana Tie Playsuit	<b>Inseam Pockets</b> Cabana Tie Playsuit	<b>Shoulder Strap Part 1</b> Cabana Tie Playsuit	<b>Shoulder Strap Part 2</b> Cabana Tie Playsuit
 <p><b>5</b></p>	 <p><b>5</b></p>		
<b>Bias Tape Left</b> Cabana Tie Playsuit	<b>Bias Tape Right</b> Cabana Tie Playsuit		