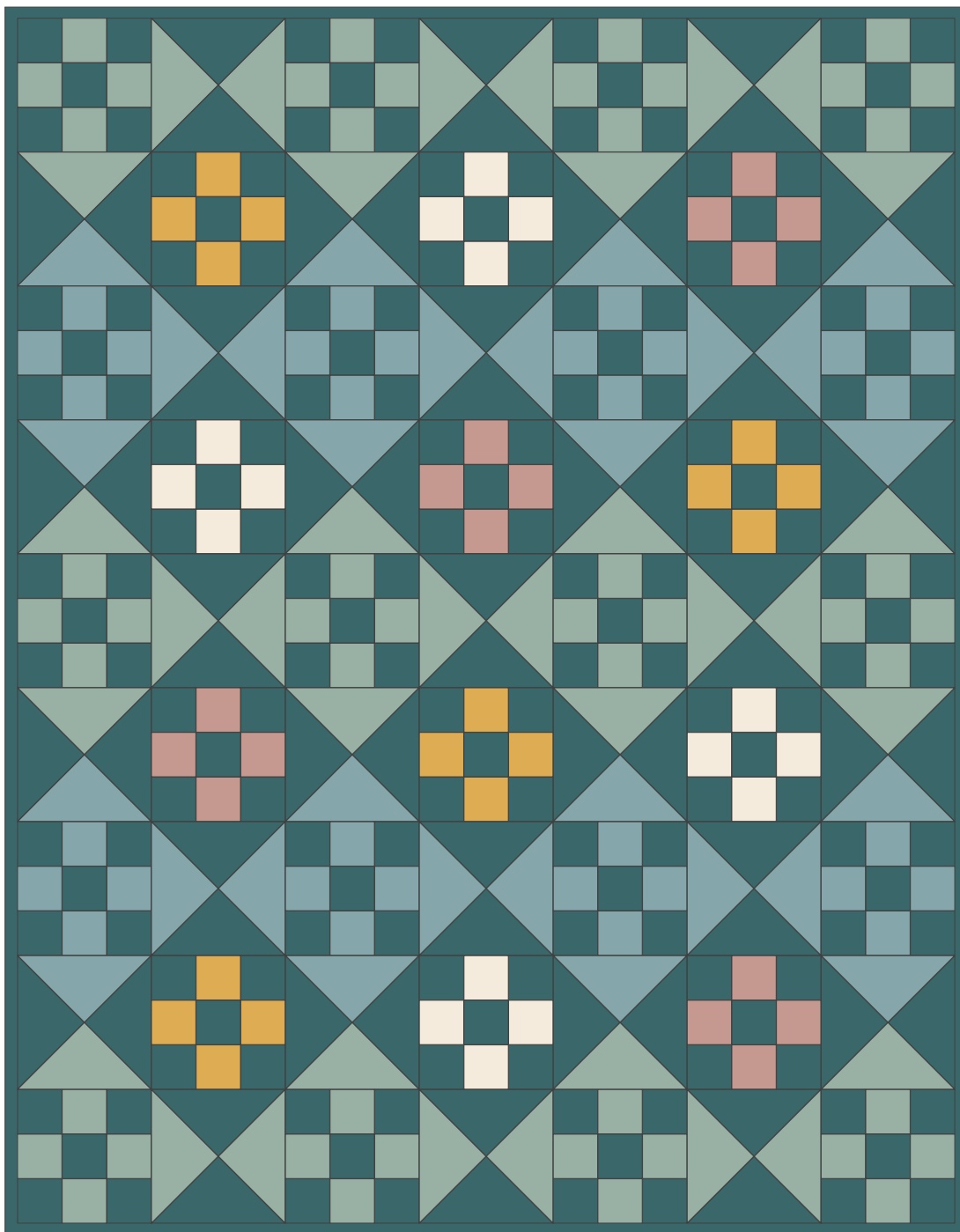




## NINE PATCH QUILT PATTERN

---





---

**MATCHY MATCHY SEWING CLUB**

[matchymatchysewingclub.com](http://matchymatchysewingclub.com) • [@matchymatchysewingclub](https://www.instagram.com/matchymatchysewingclub)

## FABRIC REQUIREMENTS

44 x 56" Throw Quilt

COLOR		YARDAGE	CUTS
	background	1.75 yards	13 — 2.5 x 44" strips 16 — 7.5" squares
	main accent 1	.75 yards	4 — 2.5 x 44" strips 9 — 7.5" squares
	main accent 2	.75 yards	3 — 2.5 x 44" strips 7 — 7.5" squares
	accent 1	.25 yards	3 — 2.5 x 22" strips
	accent 2	.25 yards	3 — 2.5 x 22" strips
	accent 3	.25 yards	3 — 2.5 x 22" strips
	binding	.25 yards	5 — 2.5 x 44" strips
	backing	2 yards	

## NOTES

This would be a great scrap buster quilt, with each nine patch block made up of differing fabric scraps. It would also be lovely and simple as a two color quilt. There are so many options to make a beautiful, heirloom quality quilt.

- Please read all instructions before you begin.
- Width of fabric (WOF) is 44".
- Seam allowance is 1/4" unless other wise noted.
- Press all seams toward the darker fabric.

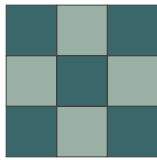
This quilt comes together pretty quickly, so have fun and enjoy the process.

Tag [@matchymatchysewingclub](#) so we can see your makes!

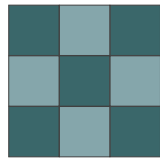
More info on the sample quilt can be found on [Matchy Matchy blog](#).

## BLOCKS

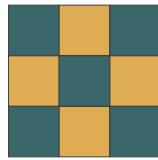
Nine Patch Block — 6” square finished size



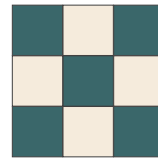
x 12



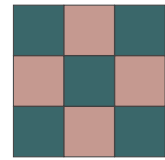
x 8



x 4

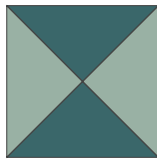


x 4

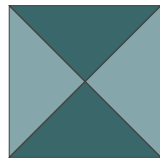


x 4

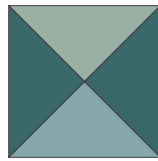
Quarter Square Triangle Block — 6” square finished size



x 9



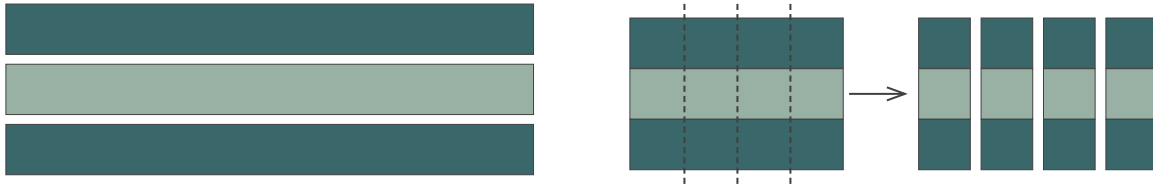
x 6



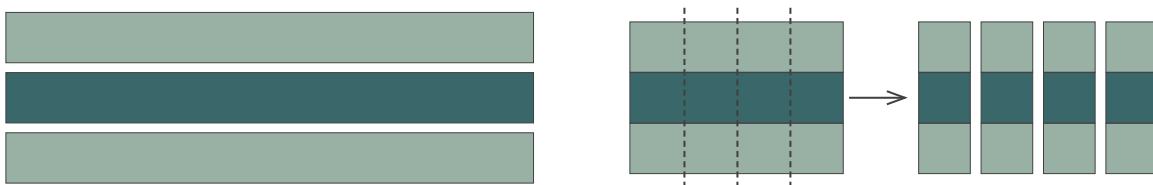
x 16

## PIECING — Nine Patch Block

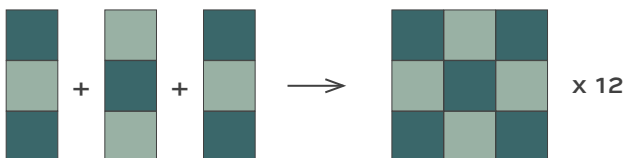
1. Begin with two strips (2.5" x WOF) of your background fabric and one strip (2.5" x WOF) of your main accent 1 fabric. Sew strips right sides together and press seams toward the darker fabric.
2. Once sewn together, subcut the pieces into 2.5" sections. You will need 24 of these pieces.



3. Repeat this process with one strip of your background fabric and two strips of your main accent 1 fabric. You will need 12 of these pieces.



4. Using two strips from step 1 and one strip from step 3, arrange your nine patch block as shown below. Sew right sides together. Press seams toward the side with the two darker fabrics. Your blocks should be 6.25" square. You will need 12 of these blocks.



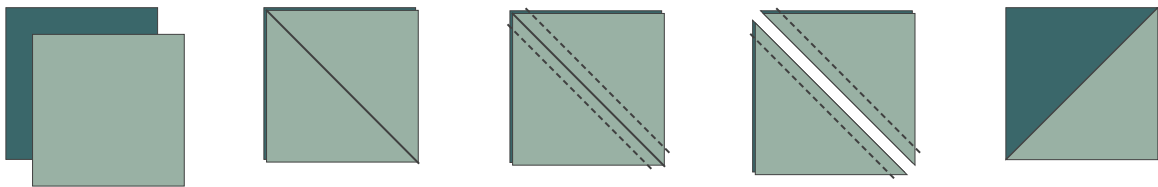
5. Repeat steps 1-4 with all accent fabric colors until you have the number of blocks noted on page 3.

## PIECING — Quarter Square Triangle Block

1. Begin with one 7.5” square of your background fabric and one 7.5” square of your main accent 1 fabric. Place the two squares on top of one another, right sides together. Draw a diagonal line or make a crease from one corner to the other.

Sew two rows of stitches on either side of your marked line with 1/4” seam allowance.

Cut in half on your marked line. Press seam toward darker fabric. Open and trim off dog ears. This will yield two half triangle blocks.

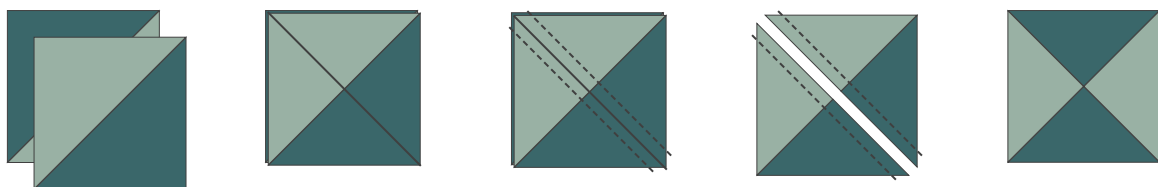


2. Take two of your finished half square triangles from step 1 and place them on top of one another, right sides together, with opposite colors touching. Seams will nest into one another.

Repeat step one by drawing a diagonal line from one corner to the other. Make sure the line is going to opposite direction of the seam created in the first step.

Sew two rows of stitches on either side of your marked line with 1/4” seam allowance.

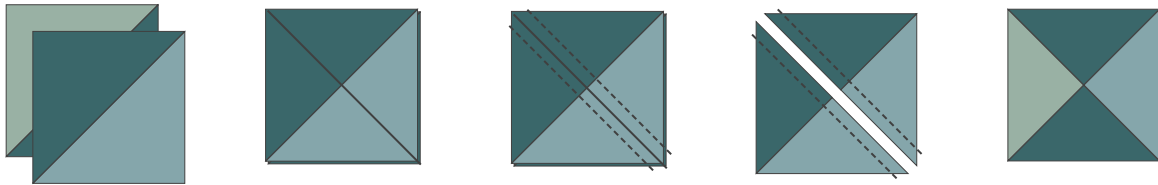
Cut in half on your marked line. Press seam toward darker fabric. Open and trim off dog ears. This will yield two quarter triangle blocks. You will need 9 of these blocks.



3. Repeat these steps with the main accent 2 fabric until you have the number of blocks noted on page 3.

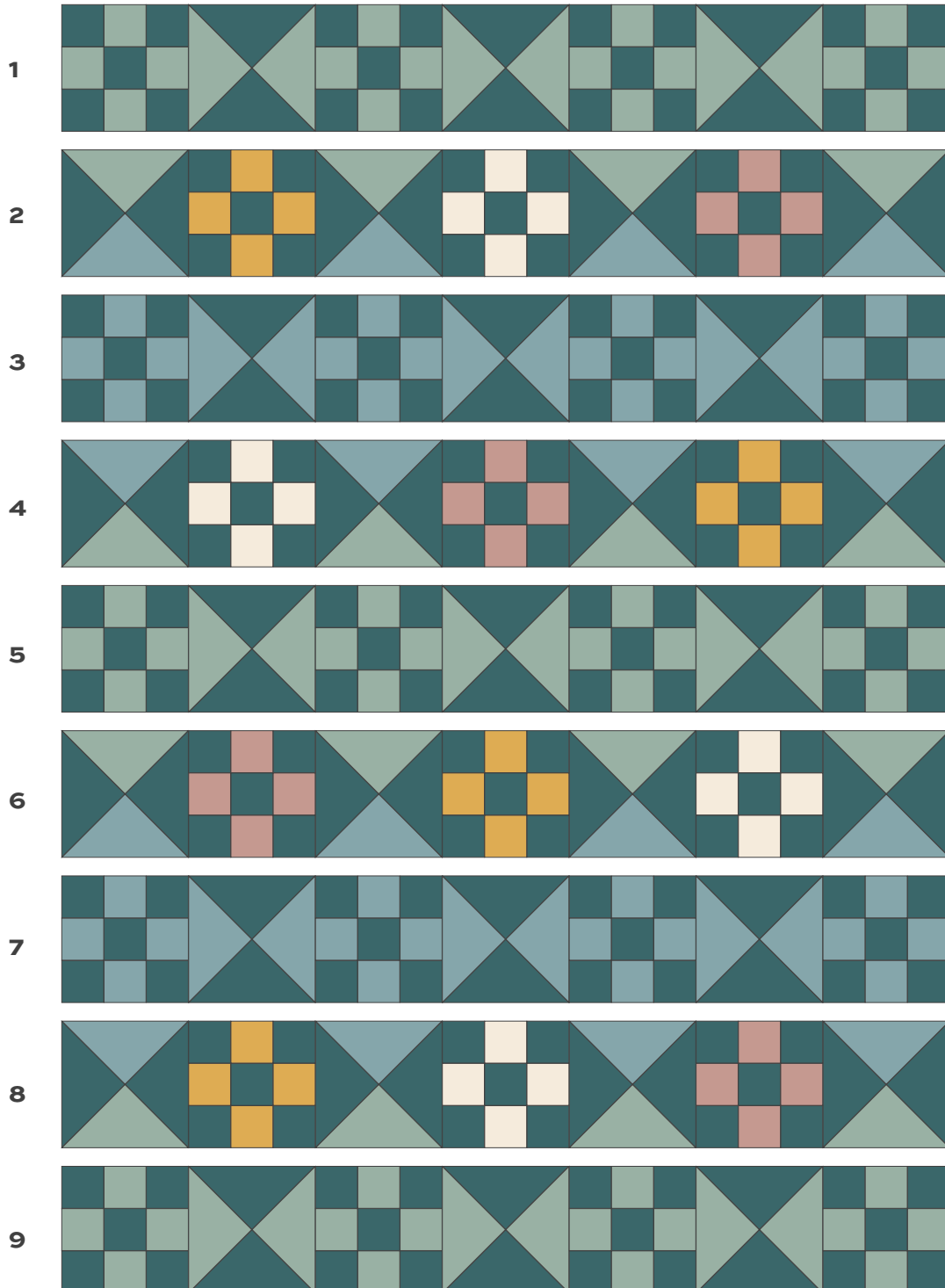
**PIECING** — Quarter Square Triangle Block continued...

4. To make the tri-color blocks you will place one half square block from step 1 on top of one half square block from step 2 and repeat the same piecing process.



## ASSEMBLING THE QUILT TOP

The blocks of each row will alternate between the nine patch blocks and the quarter square triangle blocks. Arrange the blocks as shown below. Sew right sides together with a .25" seam allowance. Press seams toward the quarter square triangle blocks. Once rows are assembled, sew them together to complete the top!



## FINISHING YOUR QUILT

1. Layer the backing (wrong side up), batting, and quilt top (right side up).
  2. Baste the 3 layers together using your preferred method.
  3. Quilt - machine or hand quilting will both be beautiful on this finished quilt.
  4. Trim and square your quilt.
  5. Sew together binding strips using bias binding method (diagonal seams). Fold and press in half. Sew binding to the quilt top with the raw edges together using a 0.5" seam allowance. Turn the binding to the backing and finish binding on the back with your preferred method.
- 

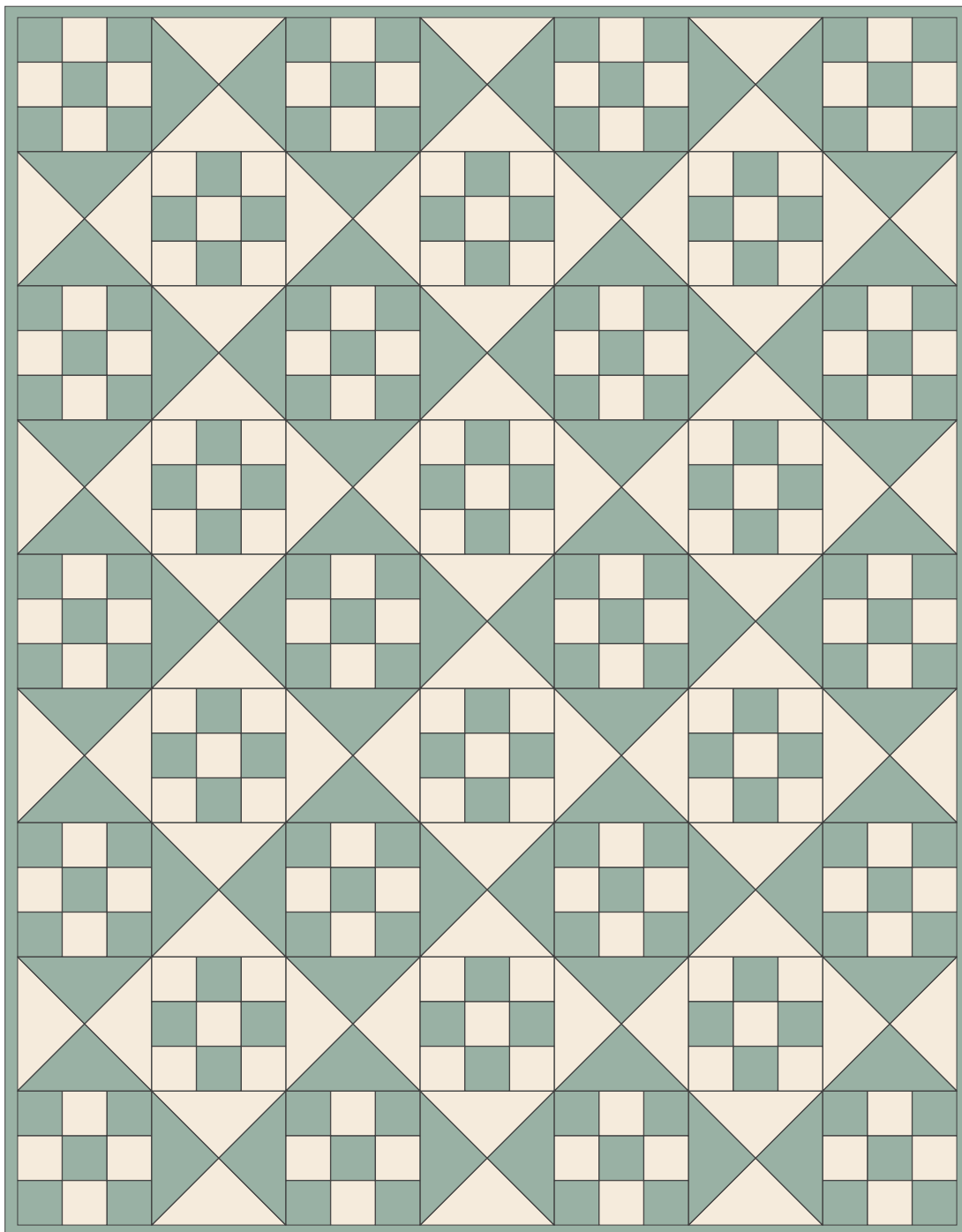
## YOU DID IT! ENJOY YOUR QUILT.

Tag [@matchymatchysewingclub](#) so we can see your makes!  
#matchymatchyquilts

© Copyright 2021 — Individual use only, not for resale. All rights reserved. This pattern may not be copied, emailed, posted on your website, or otherwise reproduced and/or distributed.



## TWO COLOR SAMPLE

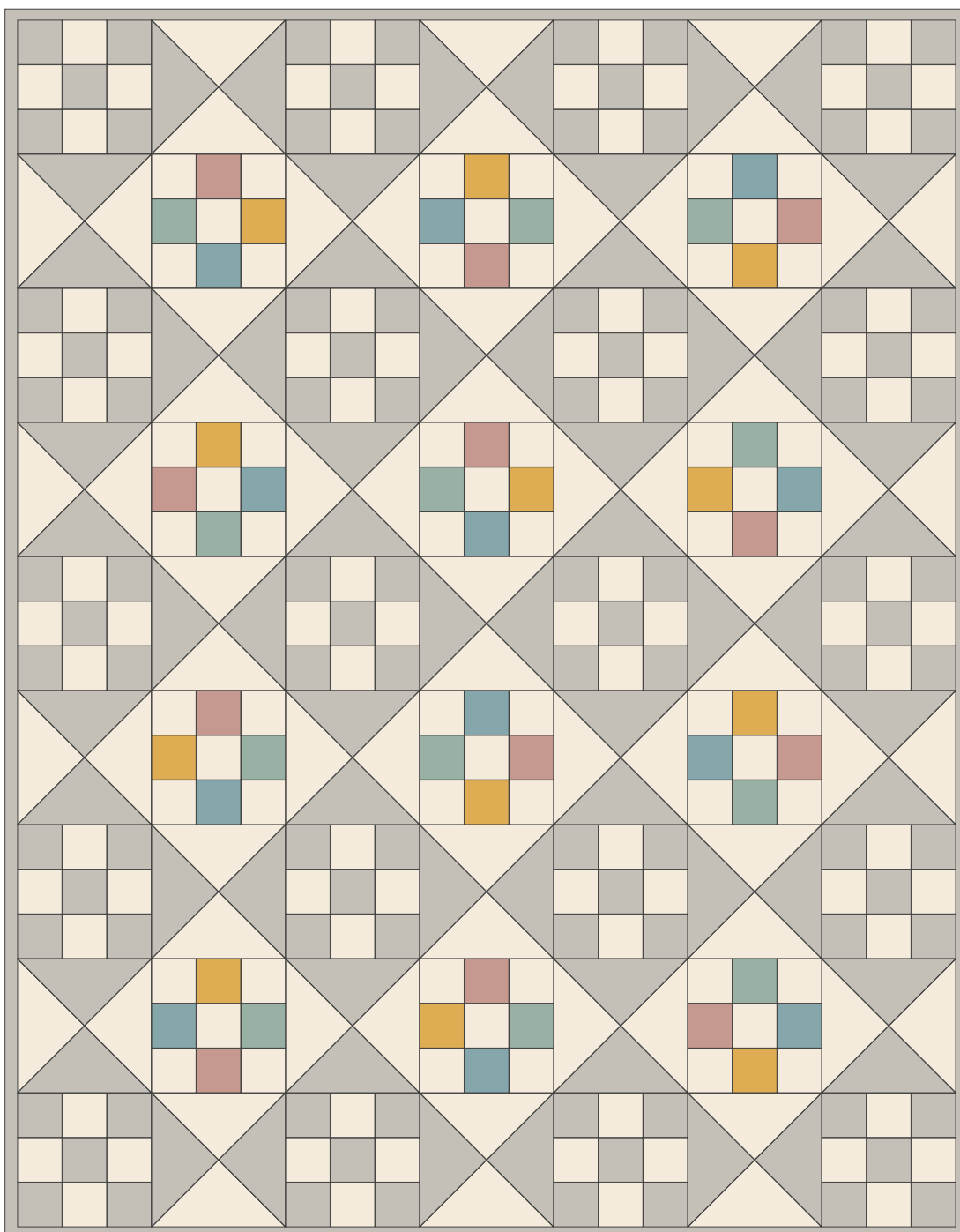


---

**MATCHY MATCHY SEWING CLUB**

[matchymatchysewingclub.com](http://matchymatchysewingclub.com) • [@matchymatchysewingclub](https://www.instagram.com/matchymatchysewingclub)

## SCRAPPY SAMPLE



---

**MATCHY MATCHY SEWING CLUB**

matchymatchysewingclub.com • @matchymatchysewingclub